

ARKA KAPAK KİLİTLERİ- Ürün Kodu: PRG-LOC-HPC

REAR DOOR CLOSING CLAMPS - Product Code: PRG-LOC-HPC

Ürün Detayları

BASKI KİLİTLER

ÜRÜN KODU: PRG-LOC-HPC

Hydraulic clamps are positive safety devices (i.e., they remain locked in the absence of fluid power) designed to close open bottom tanks. Hydraulic clamps are operated by hydraulic pressure that must be supplied by the machine they are installed on. The following figure shows a schematic diagram of a hydraulic clamp.

Product Details

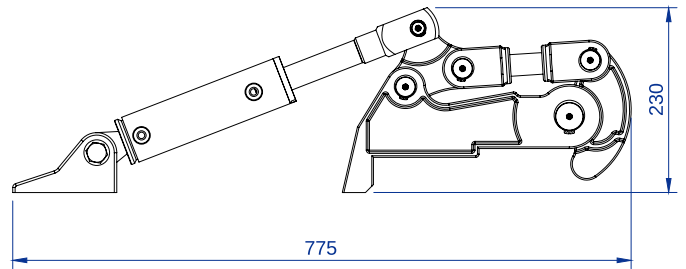
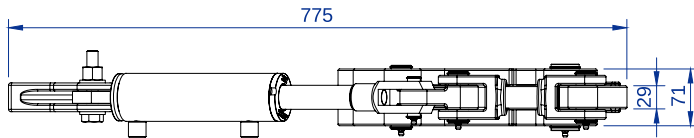
PRESSING CLAMPS

PRODUCT CODE: PRG-LOC-HPC

Hydraulic clamps are positive safety devices (i.e., they remain locked in the absence of fluid power) designed to close open bottom tanks. Hydraulic clamps are operated by hydraulic pressure that must be supplied by the machine they are installed on. The following figure shows a schematic diagram of a hydraulic clamp.

TEKNİK ÖZELLİKLER - TECHNICAL DETAILS

Gövde Malzemesi Body Material	ST37 ya da SS304 ST37 or SS304
Maks. Tank Basıncı Max. Tank Pressure	4 Bar 4 Bar
Min. Hidrolik Basıncı Min. Hydraulic Pressure	165 Bar 165 Bar



+90 312 615 52 54



info@perga.tr



Perga Machinery & Engineering



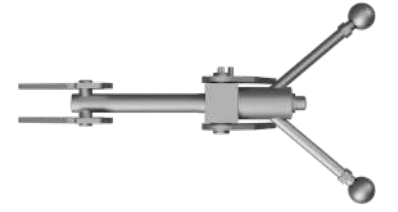
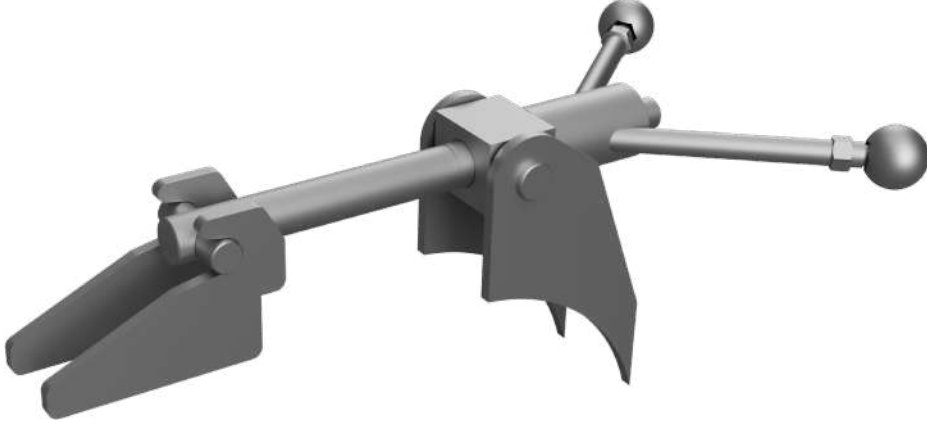
pergamakine



Gölbaşı/ANKARA



www.perga.tr



ARKA KAPAK KİLİTLERİ- Ürün Kodu: PRG-LOC-HWC

REAR DOOR CLOSING CLAMPS - Product Code: PRG-LOC-HWC

Ürün Detayları

VOLAN KİLİTLER ÜRÜN KODU: PRG-LOC-HWC

The manual hand wheel clamps are safety devices designed to allow closing open bottom tanks. Hand wheel clamps are equipped with welded supports (available in mild steel or stainless steel versions) on the tank and tank bottom respectively, and with partly threaded tie rod and clamping hand wheel. The following figure shows a schematic diagram of a hand wheel clamp.

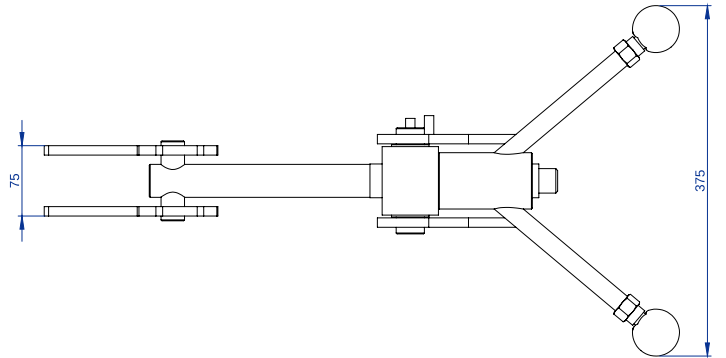
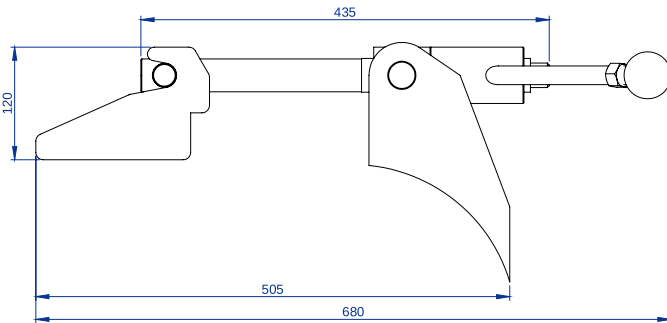
Product Details

HAND WHEEL CLAMPS PRODUCT CODE: PRG-LOC-HWC

The manual hand wheel clamps are safety devices designed to allow closing open bottom tanks. Hand wheel clamps are equipped with welded supports (available in mild steel or stainless steel versions) on the tank and tank bottom respectively, and with partly threaded tie rod and clamping hand wheel. The following figure shows a schematic diagram of a hand wheel clamp.

TEKNİK ÖZELLİKLER - TECHNICAL DETAILS

Gövde Malzemesi Body Material	ST37 ya da SS304 ST37 or SS304
Maks. Tank Basıncı Max. Tank Pressure	4 Bar 4 Bar
Min. Hidrolik Basınç Min. Hydraulic Pressure	165 Bar 165 Bar



+90 312 615 52 54



info@perga.tr



Perga Machinery & Engineering



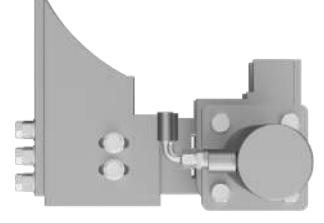
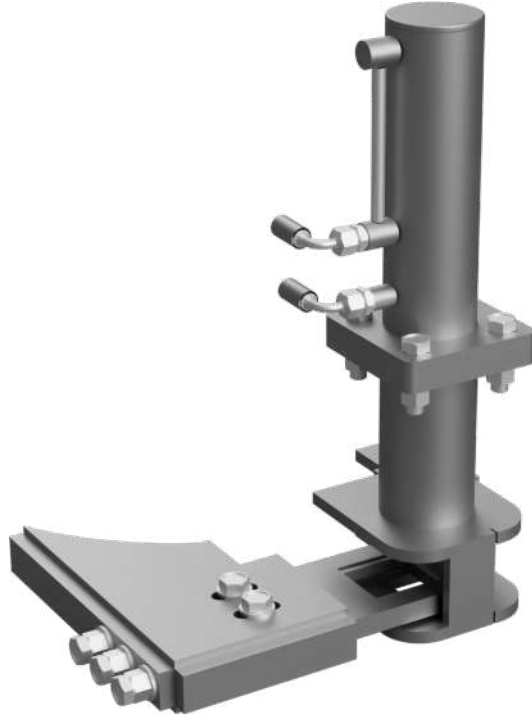
pergamakine



Gölbaşı/ANKARA



www.perga.tr



ARKA KAPAK KİLİTLERİ- Ürün Kodu: PRG-LOC-WTL

REAR DOOR CLOSING CLAMPS - Product Code: PRG-LOC-WTL

Ürün Detayları

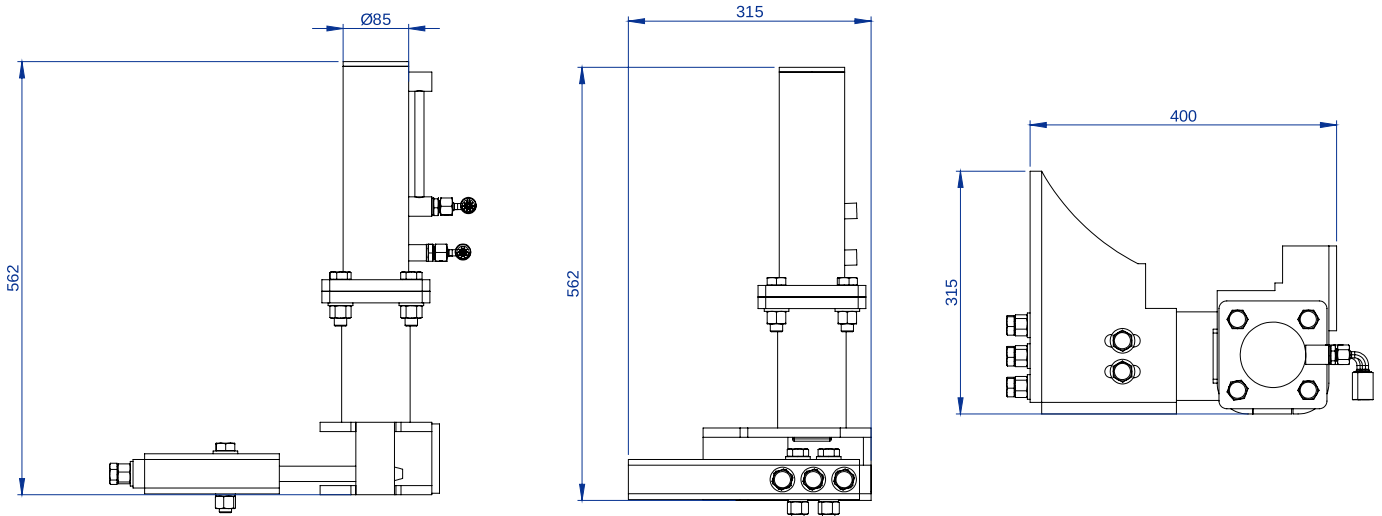
KAMA KİLİTLER ÜRÜN KODU: PRG-LOC-WTL
Rear doors made of carbon steel or stainless steel industrial closing clamps with hydraulic cylinders, welding support, adjustable clamp and fitting wedge. Designed to be used for carrying dangerous material inside vacuum and pressure tanks, from 0 to 4 Bar - 0 to 55 psi working pressure.

Product Details

WEDGE TYPE LOCKS PRODUCT CODE: PRG-LOC-WTL
Rear doors made of carbon steel or stainless steel industrial closing clamps with hydraulic cylinders, welding support, adjustable clamp and fitting wedge. Designed to be used for carrying dangerous material inside vacuum and pressure tanks, from 0 to 4 Bar - 0 to 55 psi working pressure.

TEKNİK ÖZELLİKLER - TECHNICAL DETAILS

Gövde Malzemesi Body Material	ST37 ya da SS304 ST37 or SS304
Maks. Tank Basıncı Max. Tank Pressure	4 Bar 4 Bar
Min. Hidrolik Basınç Min. Hydraulic Pressure	165 Bar 165 Bar



+90 312 615 52 54



info@perga.tr



Perga Machinery & Engineering



pergamakine



Gölbaşı/ANKARA



www.perga.tr